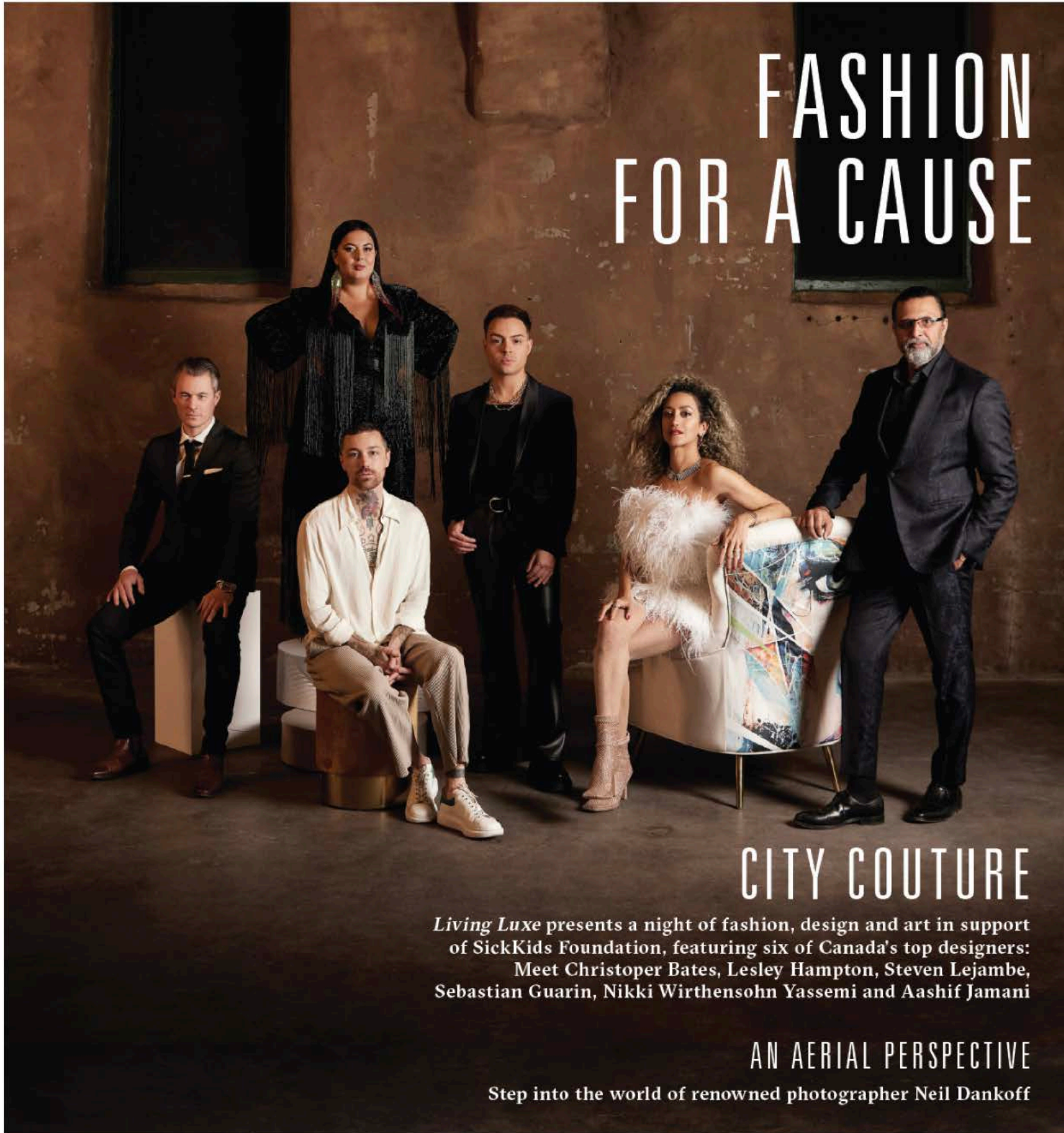


# LIVING LUXE



## FASHION FOR A CAUSE

### CITY COUTURE

*Living Luxe* presents a night of fashion, design and art in support of SickKids Foundation, featuring six of Canada's top designers: Meet Christopher Bates, Lesley Hampton, Steven Lejambe, Sebastian Guarin, Nikki Wirthensohn Yassemi and Aashif Jamani

AN AERIAL PERSPECTIVE

Step into the world of renowned photographer Neil Dankoff

Special Events — Modern Homes — Hot Trends — Giving Back

Winter Issue

# the sky is the LIMIT

The interior design of this new residential high-rise in Toronto's Forest Hill demanded the talent of one of the top design firms in the city. Robin Nadel of Wise Nadel Design shares the story behind what makes this luxury rental property so unique.

By Lisa van de Geyn  
Photography by Brandon Barré

“This is the first residential high-rise we’ve ever been involved in. It was an incredible experience,” says designer Robin Nadel, one of two principals along with Harvey Wise at Wise Nadel Design in Toronto, reflecting on the magnificent project her firm recently completed.

It was a few years ago when a client introduced the design duo to DBS Developments, a fully integrated real estate development company. “They were looking for a designer for a new project and were given our firm’s name because of our history and reputation in high-end residential design in Forest Hill. After meeting us and seeing our work, they ultimately felt we were the right fit,” she says. The project is a building on the edge of the prestigious Forest Hill neighbourhood that has impressive 360-degree views of Toronto from the rooftop. Not only is it within walking distance to boutiques and restaurants in Forest Hill Village, but it’s also not far from Yorkville’s trendy shopping and dining scene.

Wise Nadel was brought in during the planning stages with renowned architects Diamond Schmitt. “Being involved in the building before they broke ground meant we were able to contribute to the configuration of the suites and the amenities and ensure a seamless transition between the interior and exterior spaces,” she says. “We were mindful of bringing in luxury, great design and quality that would appeal to young professionals or empty-nesters and anyone in between. This prominent building offers an elevated living experience in the rental market — it’s luxurious, contemporary and welcoming.” ▶



That sense of luxury and drama is felt the moment you enter the building. “You walk into this 20-foot-high space that has grandeur, but it also has a very warm, curated feel,” she says. The lobby was created to feel like an elegant and inviting living room. Designed as an extension of the private suites, the lobby and amenity spaces are where residents can meet guests, relax and lounge by the fire. Your eye is immediately drawn to the impressive fireplace clad in unique silver onyx and to the sculptural wall art by Anthony Valin that adorns the adjacent walls of the lobby. Nadel also selected an exquisite light fixture to hang above the sitting area. “I wanted to do something textural and this piece by Zac Ridgely is a wonderful combination of bronze and polished nickel, metals that make appearances throughout the building.” The other side of the lobby features the concierge desk, done in a gorgeous quartzo bianco.

The amenities Nadel designed include a party room, games room, gym and terraces that act as upper and lower outdoor living spaces. The games room has a library feel, filled with beautiful books and carefully selected accessories. The dining room is especially striking — there’s a beautiful chef’s kitchen adjacent to the stone dining table that seats up to 12, making it the perfect place to host exquisite dinner parties. “These areas really feel like an extension of the resident suites. They don’t feel like common spaces at all. That’s the subtlety we brought to the project. It feels like a cohesive and intimate space.”

When it came to the suites, Nadel took the same approach — she wanted warmth, comfort and interconnected style. “I saw this building as a collection of individual residences, not as a multi-unit building.” There are nuances in layouts and finishes from floor to floor, but Nadel’s main goal was to give residents all the comforts of home and the developers gave her leeway to design how she pictured the space. Each suite features floor-to-ceiling windows and an open-concept floor plan, as well as generous balconies. “I wanted the suites to feel luxurious and spacious and for our interiors to be the perfect backdrop to the furniture each resident will bring in,” she explains. “We selected high-end, elevated porcelain and quartz materials to provide low-maintenance luxury. These materials are refined-looking, but also very functional.” The kitchens have a contemporary feel, while the living and dining room spaces are streamlined and echo the lobby’s inviting ambiance. “We tried to keep it consistent through the building. We repeated a few materials from the lobby to offer a sense of unity. It was really important to us to bring in a distinct style while keeping the spaces neutral enough to work with the ways the residents would want to decorate.”

Two prominent materials Nadel used to draw inspiration from were the exterior brick and adonized bronze window frames that she brought into the interior. “The brick is unique



“It’s luxurious,  
contemporary and welcoming.”



— it’s thin and elongated and sets the building apart from most in the city. I decided to use the same brick as a feature in the gym to give the space personality and to bring in that piece of the outside,” she says. As for the bronze, Nadel says it’s a timeless metal that stands for luxury. “It’s weaved throughout the building in the window and door frames, the fluting on the ground floor, accents in the concierge desk and in the plumbing and lighting fixtures in the upper suites. We embraced the palette and really wanted it to be a consistent feature throughout the building.”


There are already residents living in the suites and the final touches are being put on the rest of the building. “With this residence, they’re really trying to introduce a new standard for luxury rentals,” says Nadel. “There’s a long list of curated services and amenities, from the private dining room and the fitness facility to the 24-hour concierge and wine-tasting events. It’s all about residents using the building and enjoying the space, and I was so proud to be part of its creation.”



# CELEBRATING A NEW VISION OF LUXURY LIVING IN FOREST HILL

Guests got together to welcome the newest residence in one of Toronto's most recognizable neighbourhoods.

Photography by [Eric Lem](#) and [Robert Okine](#)

DBS Developments recently hosted a special ribbon-cutting gala event to celebrate its newest, signature residence at 215 Lonsdale Road in Toronto's Forest Hill neighbourhood. The evening was attended by partners, guests and residents who were treated to the building's curated spaces and services, including its grand lobby, party room and 17th floor rooftop terrace overlooking the city's magnificent skyline. For leasing details, visit [2fifteen.ca](http://2fifteen.ca). 



1. TERRACE VIEW. 2. TAMI KENWELL AND KELLIE SPEAKMAN. 3. BRYAN LEVY AND KELLIE SPEAKMAN. 4. ALLAN LEVY AND GLORIA SALOMON. 5. ROBERT LEVI, BEN HANKAI AND ANDREW COOK. 6. 2FIFTEEN EVENT. 7. DANIEL MAZZONE. 8. BRYAN LEVY, GLORIA SALOMON AND KELLIE SPEAKMAN. 9. BEN ROSSETTO, ROBIN NADEL AND HARVEY WISE. 10. MICHAEL GENNIS, SAMANTHA VELLA, SHERYL ERENBERG, ALLYSSON GOODY AND AMANDA ESPOSITO.